

**SPECIFICATIONS**

Indoor cooler (+35°F) (no floor)  
Vinyl NSF gasket (1/16" joint thickness), Cam-Lock layout SMI

**SPECIAL INSTRUCTIONS**

**WALL PANELS**

Construction: 4" urethane  
Exterior Finish: 22 ga. stainless steel 304 #4 / Stucco galvalume  
Interior Finish: .040 stucco white aluminum  
Ceiling connections: Camlock  
Floor connections: Camlock screed, HD

**CEILING PANELS**

Construction: 4" high density urethane  
Exterior Finish: Metal  
Interior Finish: .040 stucco white aluminum  
Ceiling Caps: Factory mounted  
Live Load: 10 psf

**DOORS**

[A]: 34" x 75" flush model G3 self-closing cooler door

\*\*\* ELECTRICAL COMPONENTS PRE-WIRED \*\*\*

\*\*\* LEAF WILL NOT BE RAISED UNLESS SPECIFIED OTHERWISE \*\*\*

Brand: Imperial Brown

Frame: 4" high density urethane, 3-sided

w/ .040 stucco white aluminum @ int.

w/ 24 ga. stainless steel 430 (magnetic) liners

w/ 22 ga. stainless steel 304 #4 @ ext.

w/ .040 stucco white aluminum @ int.

w/ Magnetic gasket

(3) Component Hardware #WS9 spring assisted adjustable hinge

(1) Kason #27C cylinder locking deadbolt handle

(1) Kason #27C twist-off knob inside release

(1) Kason "PUSH" pad

(1) Kason #1094 hydraulic door closer (polished chrome)

(1) Weiss 24DT-L, single pole switch and thermometer combo @ ext.

(1) Terminal J-Box @ int.

(1) 14" x 14" non-heated view window

36" high AFF .063 aluminum diamond tread (LP) kickplates (Leaf, ext. & int.)

**PARTS**

(1) ea. 4' LED light fixture w/ (2) LED lamps for cooler or freezer application (Keil -36W, 120V, 0.3A)-(Fixture ships loose for field installation.)

(4) ea. IB cove base-6" x 96" x .040 stucco white aluminum

(2) ea. (2" x 4") x 96" x 22 ga. stainless steel 304 #4 outside corner vertical closure

(2) ea. (2" x 4") x 48" x 22 ga. stainless steel 304 #4 outside corner vertical closure

(1) set 22 ga. stainless steel 304 #4 removable ceiling closure-Please Verify Closure Dimensions and Requirements

Estimated Cavity Size = 1' - 6" (18") high x 15' - 0" (180") long

**REFRIGERATION**

(1) ea. System #1 - Outdoor R448a split system w/ intelligent 7335 BTU/H @ 9.8F TD with 9.3 hr runtime @ 35F inside/85F outside room 90F @ cond. unit, 911ft altitude

(1) Climate Control R448a air cooled condensing unit #CCH0005MCAQZA0000

208-230V/3ø/60Hz/0.5HP Scroll compressor

MCA=15, MOPD =15

24.625W x 28.25D x 19.75H x 167lbs.

(1) Climate Control R448a Low Profile evaporator model

#CEL0060AS6AMAB0200

w/ (1) 2-speed EC motors (0.9A) & air defrost

w/ mounted parts

115V/1ø/60HZ

29.5W x 13.25D x 16.4375H x 36lbs.

**NOTES**

Meets 2009 Federal Energy Independence and Security Act Requirements.

**STANDARD NOTES**

To prevent condensation, a minimum 2" from the walk-in exterior surface is required. High humidity conditions may require force ventilation in addition to clearance.

Installation site floor must be true and level within 3/16" per 10' or additional costs may be incurred.

R-Plus Doors sliding and vertical lift doors shall not be considered means of egress. Check code egress requirements for your application.

**ELECTRICAL**

Field electrician to verify maximum acceptable load for light switches. If load is too high, then relay type controls should be used.

After wiring devices, All conduits must be sealed to stop moisture transfer through electrical raceways.

Failure to seal device per NEC codes WILL VOID WARRANTY.

**REVISIONS**



**NSF LABEL**  
N.S.F. LISTED (STD #7)  
N.S.F. GASKET @ ALL PANEL JOINTS

**- PRELIMINARY DRAWING -**

Customer Note: This is a preliminary drawing only. Approving this drawing only indicates that you agree with overall dimensions and door and opening locations. Panel sizes and layout is subject to change. If "Nominal Size" has been quoted, then actual dimensions may end up a bit smaller than drawn herein. Actual dimensions will be shown on subsequent non-preliminary drawings. Should discrepancies be found between drawing and sales order, customer may be asked to approve standard Submittal drawings.

The customer or their representative in signing these drawings is taking responsibility for overall size and fit around building walls, columns and ceiling restrictions, door locations, openings for equipment supplied by others.

APPROVED FOR FABRICATION WITH NO CHANGES  
 APPROVED FOR FABRICATION WITH CHANGES  
 REVISE AND RESUBMIT

Signature: \_\_\_\_\_

DO NOT SCALE THIS DRAWING
SCALE: 3/16" = 1'-0"
DATE DRAWN: 2/18/2022
DATE PRINTED: 2/18/2022
BY: PDX-Assistant
CHK'D BY:
DRW#: <b>22-IB-71820-01</b>
BOX: 1 OF 1
SHEET: 1 OF 5

**IMPERIAL BROWN**  
198 SE 233rd Ave.  
Gresham, OR 97030  
Phone: 503-665-5539  
Fax: 503-665-2929  
www.imperial-brown.com

**GREAT LAKES HOTEL SUPPLY**  
- SOUTHFIELD, MI

**HECHTMAN SENIOR LIVING**  
- NORTHFIELD TWP, MI

**NOTE: TO PREVENT CONDENSATION, ALLOW 2" MIN. CLEARANCE AROUND THE EXTERIOR OF INDOOR WALK-INS. MAINTAIN RELATIVE HUMIDITY BELOW 55% AND TEMPERATURE BELOW 75°F OR FORCED VENTILATION MAY BE REQUIRED IN ADDITION TO CLEARANCE.**


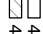
**NOTE: FLOORS OF INSTALLATION SITES SHALL BE TRUE AND LEVEL WITHIN 3/16" PER 10' OR ADDITIONAL COSTS MAY BE INCURRED.**

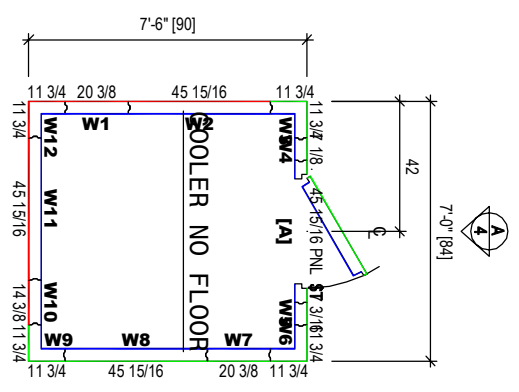
**NOTE: MANUFACTURER IS NOT RESPONSIBLE FOR ELECTRICAL, PLUMBING, PERMITS OR CONCRETE WORK UNLESS LISTED ON THE QUOTE.**

**22-IB-71820-01**  
22-IB-71820.00.01-01

NOT FOR CONSTRUCTION

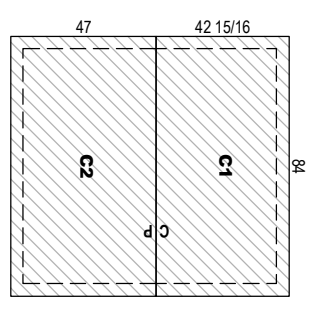
**PRELIMINARY**

CONSTRUCTION LEGEND:  
 4" urethane  
 4" high density urethane

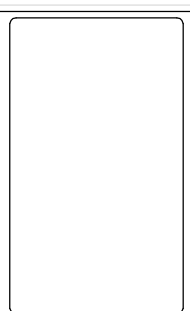


**WALL PANELS**  
 Stucco galvalume  
 22 ga. stainless steel 304 #4  
 .040 stucco white aluminum

**CEILING PANELS**



DO NOT SCALE THIS DRAWING  
 SCALE: 3/16" = 1'-0"  
 DATE DRAWN: 2/18/2022  
 DATE PRINTED: 2/18/2022  
 BY: PDX-Assistant  
 CHK'D BY:  
 DRW#: 22-IB-71820-01  
 BOX: 1 OF 1  
 SHEET: 2 OF 5

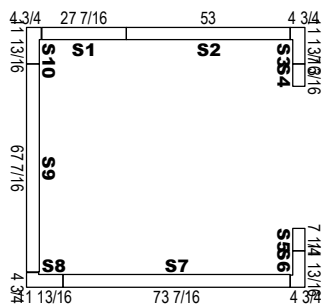


IMPERIAL BROWN  
 198 SE 233rd Ave.  
 Gresham, OR 97030  
 Phone: 503-665-5539  
 Fax: 503-665-2929  
 www.imperial-brown.com

GREAT LAKES HOTEL SUPPLY  
 - SOUTHFIELD, MI  
 HECHTMAN SENIOR LIVING  
 - NORTHFIELD TWP, MI  
**NOTE: TO PREVENT CONDENSATION, ALLOW 2" MIN. CLEARANCE AROUND THE EXTERIOR OF INDOOR WALK-INS. MAINTAIN RELATIVE HUMIDITY BELOW 55% AND TEMPERATURE BELOW 75°F OR FORCED VENTILATION MAY BE REQUIRED IN ADDITION TO CLEARANCE.**  
**NOTE: FLOORS OF INSTALLATION SITES SHALL BE TRUE AND LEVEL WITHIN 3/16" PER 10' OR ADDITIONAL COSTS MAY BE INCURRED.**  
**NOTE: MANUFACTURER IS NOT RESPONSIBLE FOR ELECTRICAL, PLUMBING, PERMITS OR CONCRETE WORK UNLESS LISTED ON THE QUOTE.**

**22-IB-71820-01**  
 22-IB-71820.00.01-01  
 NOT FOR CONSTRUCTION  
 PRELIMINARY

**SCREENED PANELS**



DO NOT SCALE THIS DRAWING

SCALE: 3/16" = 1'-0"

DATE DRAWN: 2/18/2022

DATE PRINTED: 2/18/2022

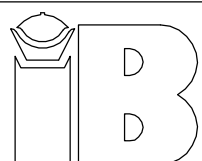
BY: PDX-Assistant

CHK'D BY:

DRW#: 22-IB-71820-01

BOX: 1 OF 1

SHEET: 3 OF 5



IMPERIAL BROWN  
198 SE 233rd Ave.  
Gresham, OR 97030  
Phone: 503-665-5539  
Fax: 503-665-2929  
www.imperial-brown.com

GREAT LAKES HOTEL SUPPLY  
- SOUTHFIELD, MI

HECHTMAN SENIOR LIVING  
- NORTHFIELD TWP, MI

NOTE: TO PREVENT CONDENSATION, ALLOW 2" MIN. CLEARANCE AROUND THE EXTERIOR OF INDOOR WALK-INS. MAINTAIN RELATIVE HUMIDITY BELOW 55% AND TEMPERATURE BELOW 75°F OR FORCED VENTILATION MAY BE REQUIRED IN ADDITION TO CLEARANCE.  
NOTE: FLOORS OF INSTALLATION SITES SHALL BE TRUE AND LEVEL WITHIN 3/16" PER 10' OR ADDITIONAL COSTS MAY BE INCURRED.  
NOTE: MANUFACTURER IS NOT RESPONSIBLE FOR ELECTRICAL, PLUMBING, PERMITS OR CONCRETE WORK UNLESS LISTED ON THE QUOTE.

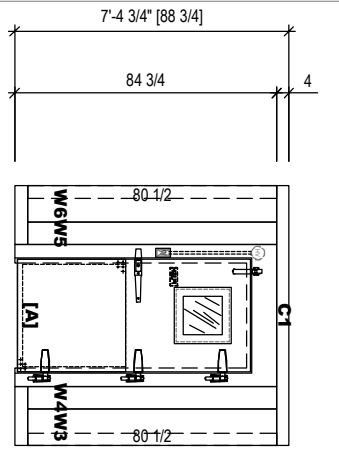
**22-IB-71820-01**

22-IB-71820.00.01-01

NOT FOR CONSTRUCTION

PRELIMINARY

4  
A  
ELEVATION



DO NOT SCALE THIS DRAWING

SCALE: 3/16" = 1'-0"

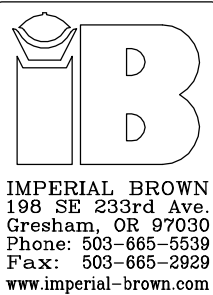
DATE DRAWN: 2/18/2022

DATE PRINTED: 2/18/2022

BY: PDX-Assistant

CHK'D BY:

DRW#: 22-IB-71820-01  
BOX: 1 OF 1  
SHEET: 4 OF 5



**GREAT LAKES HOTEL SUPPLY**  
- SOUTHFIELD, MI

**HECHTMAN SENIOR LIVING**  
- NORTHFIELD TWP, MI

**NOTE: TO PREVENT CONDENSATION, ALLOW 2" MIN. CLEARANCE AROUND THE EXTERIOR OF INDOOR WALK-INS. MAINTAIN RELATIVE HUMIDITY BELOW 55% AND TEMPERATURE BELOW 75°F OR FORCED VENTILATION MAY BE REQUIRED IN ADDITION TO CLEARANCE.**

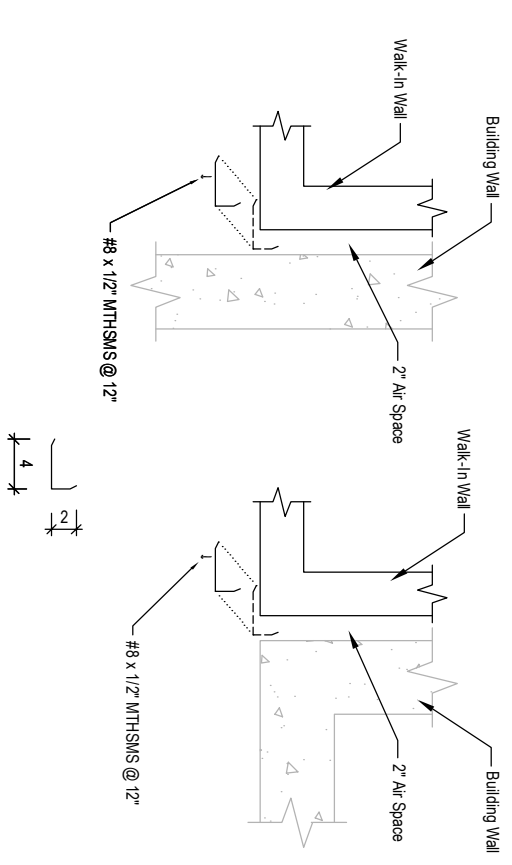
**NOTE: FLOORS OF INSTALLATION SITES SHALL BE TRUE AND LEVEL WITHIN 3/16" PER 10' OR ADDITIONAL COSTS MAY BE INCURRED.**

**NOTE: MANUFACTURER IS NOT RESPONSIBLE FOR ELECTRICAL, PLUMBING, PERMITS OR CONCRETE WORK UNLESS LISTED ON THE QUOTE.**

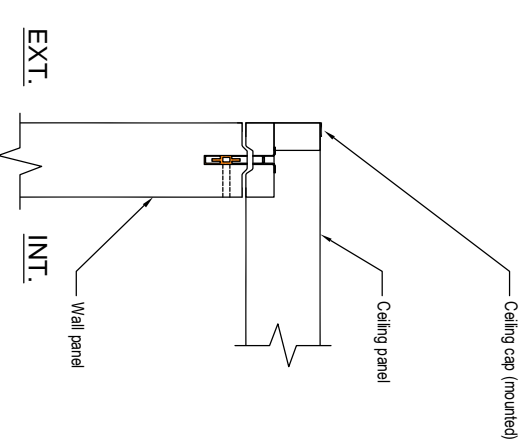
**22-IB-71820-01**  
22-IB-71820.00.01-01

NOT FOR CONSTRUCTION

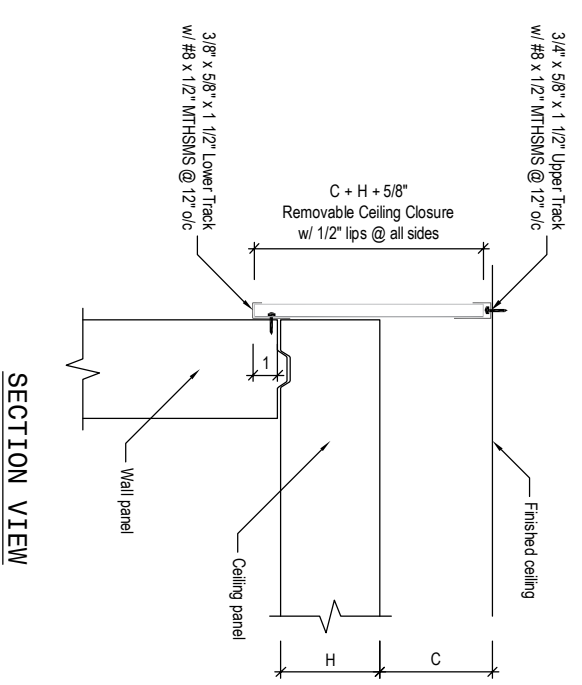
PRELIMINARY



1 VERTICAL CLOSURES

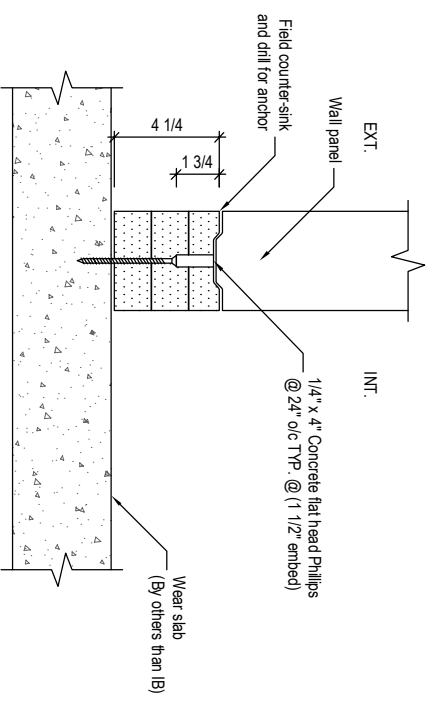


3 CEILING CONNECTION

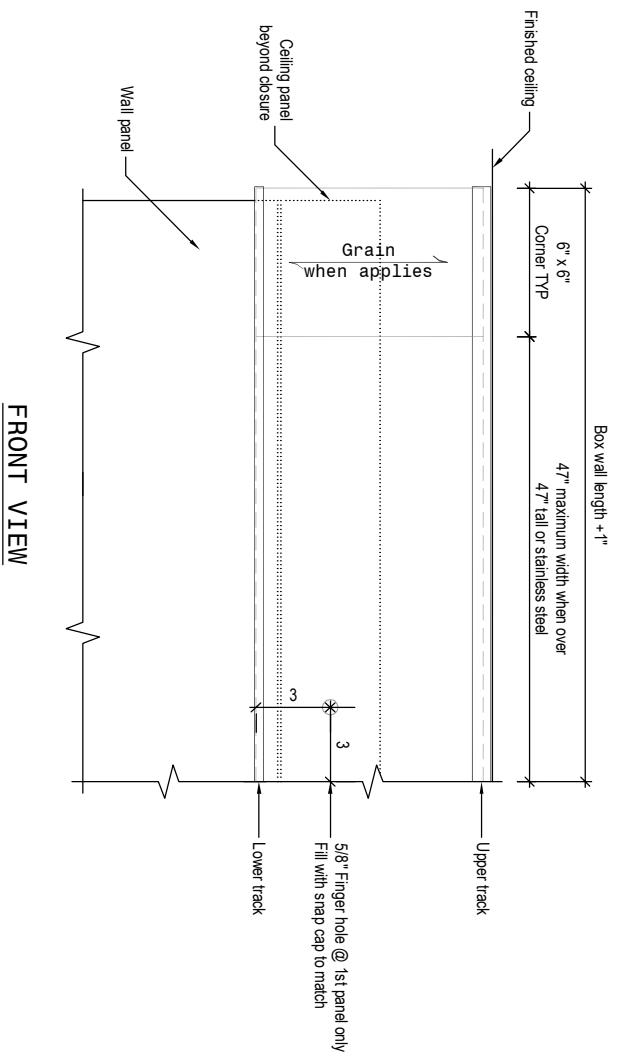


2 REMOVABLE CEILING CLOSURE

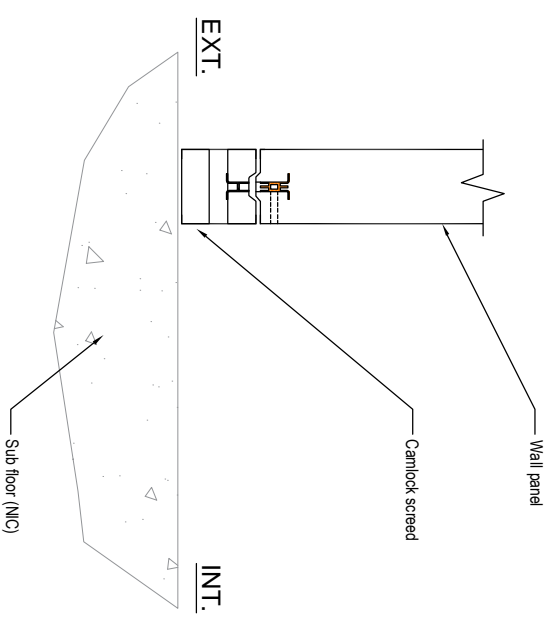
CAUTION: If ceiling height is not provided closures will be back order and shipped later additional freight charges will be charged!



4 CAMLOCK SCREED, 4 1/4" HIGH, GENERIC INTO CONCRETE

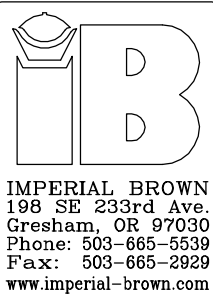


FRONT VIEW



5 FLOOR CONNECTION

DO NOT SCALE THIS DRAWING  
 SCALE: 3/16" = 1'-0"  
 DATE DRAWN: 2/18/2022  
 DATE PRINTED: 2/18/2022  
 BY: PDX-Assistant  
 CHK'D BY:  
 DRW#: 22-IB-71820-01  
 BOX: 1 OF 1  
 SHEET: 5 OF 5



GREAT LAKES HOTEL SUPPLY  
 - SOUTHFIELD, MI  
 HECHTMAN SENIOR LIVING  
 - NORTHFIELD TWP, MI  
 NOTE: TO PREVENT CONDENSATION, ALLOW 2" MIN. CLEARANCE AROUND THE EXTERIOR OF INDOOR WALK-INS. MAINTAIN RELATIVE HUMIDITY BELOW 55% AND TEMPERATURE BELOW 75°F OR FORCED VENTILATION MAY BE REQUIRED IN ADDITION TO CLEARANCE.  
 NOTE: FLOORS OF INSTALLATION SITES SHALL BE TRUE AND LEVEL WITHIN 3/16" PER 10' OR ADDITIONAL COSTS MAY BE INCURRED.  
 NOTE: MANUFACTURER IS NOT RESPONSIBLE FOR ELECTRICAL, PLUMBING, PERMITS OR CONCRETE WORK UNLESS LISTED ON THE QUOTE.

22-IB-71820-01  
 22-IB-71820.00.01-01  
 NOT FOR CONSTRUCTION  
 PRELIMINARY