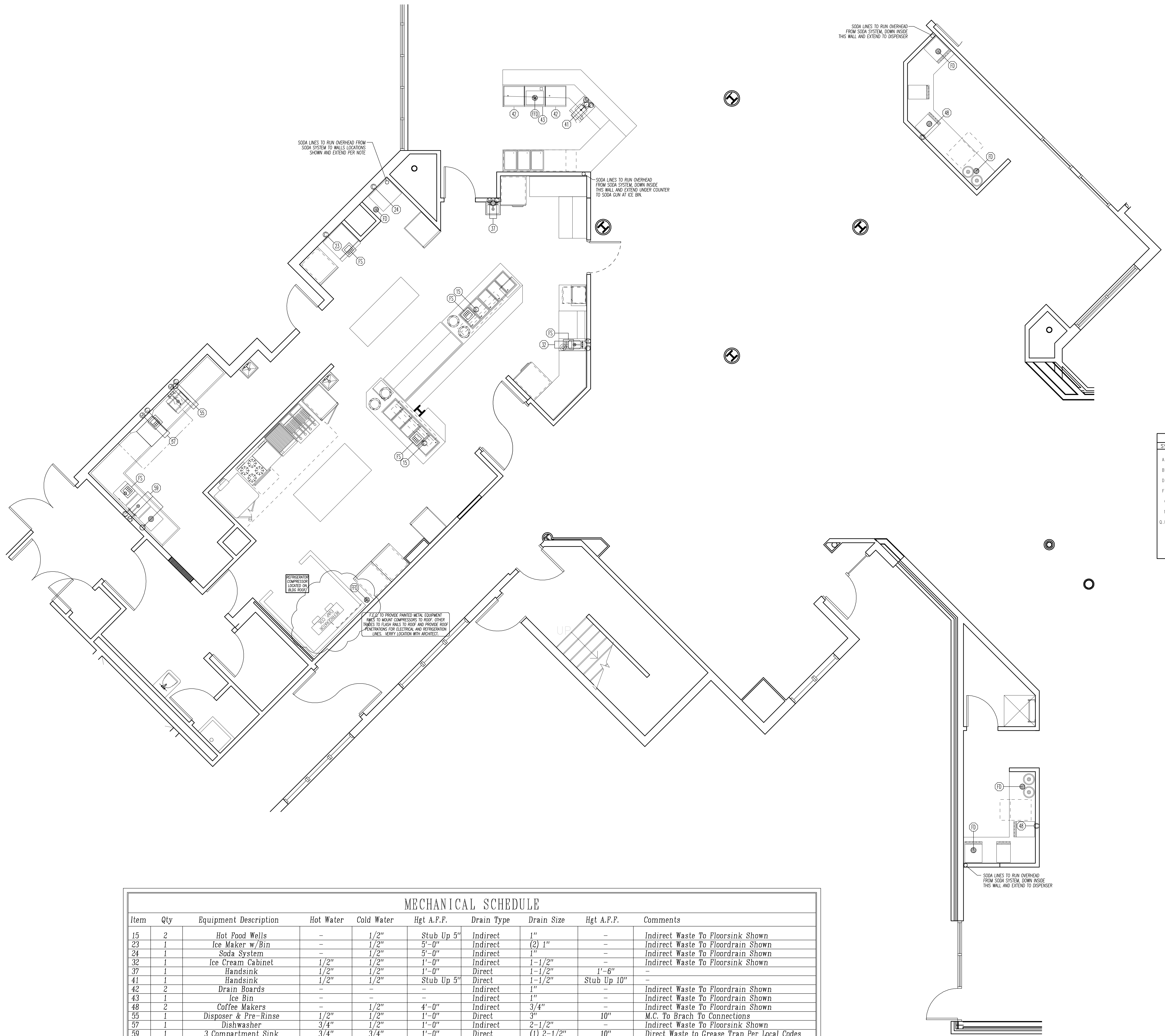


HECHTMAN 2 DINING RENOVATIONS
DD PLANS



(NOTE: MECHANICAL SYMBOLS APPLY TO THIS SHEET ONLY)

MECHANICAL SYMBOL LEGEND	
SYMBOL	DESCRIPTION
A. F. F.	ABOVE FINISHED FLOOR
B. T. C.	BRANCH TO CONNECTION
D. F. A.	DOWN FROM ABOVE
F. E. C.	FOODSERVICE EQUIPMENT CONTRACTOR
G. C.	GENERAL CONTRACTOR
M. C.	MECHANICAL CONTRACTOR
D. D. G. H.	QUICK DISCONNECT GAS HOSE
⊕	FLUNNEL-TYPE FLOOR DRAIN (SANITARY)
⊖	DIRECT CONNECT DRAIN
⊙	FLOOR DRAIN (DO NOT SLOPE FLOOR TO DRAIN)
⊗	ROUND FLOORSINK (8" DIAMETER)
⊠	FULL-GRADE FLOORSINK (12" SQUARE)
⊡	1/2 GRADE FLOORSINK (12" SQUARE)
⊢	FLOORSINK; GRATE AS NEEDED (8" SQUARE)
⊣	DIRECT CONNECT GAS SUPPLY
⊤	FLEXIBLE QUICK RELEASE GAS SUPPLY
⊥	COLD WATER
⊦	HOT WATER
⊧	STEAM SUPPLY
⊨	CONDENSATE RETURN

- DIVISION 11400 NOTES
- THIS DRAWING AND THE DATA CONTAINED HEREIN ARE PROVIDED FOR BIDDING PURPOSES ONLY AND ARE NOT INTENDED AS ROUGH-IN DRAWINGS TO BE USED ON THE PROJECT SITE. THE F.E.C. SHALL PROVIDE FINAL DIMENSIONED ROUGH-IN DRAWINGS AND EQUIPMENT DATA FOR CONSTRUCTION PURPOSES.
 - REFER TO THE DIVISION 11400 GENERAL AND ITEM SPECIFICATIONS FOR ADDITIONAL INSTALLATION REQUIREMENTS.
 - F.E.C. SHALL VERIFY UTILITY REQUIREMENTS OF OWNERS EXISTING EQUIPMENT (IF ANY) SCHEDULED FOR RE-USE.
- DIVISION 15 NOTES
- M.C. SHALL ROUGH IN UTILITY LINES THROUGH WALLS, FLOORS AND CEILINGS. CONNECT WASTE LINES FROM ROUGH INS AND MAKE ALL CONNECTIONS TO THE FOODSERVICE EQUIPMENT. M.C. TO PROVIDE ALL TRAPS, MANIFOLDS AND PIPING REQUIRED TO INTERCONNECT SINK DRAINS AS SHOWN. M.C. TO PROVIDE ALL TRAPS, VALVES, PIPING, ETC. NEEDED FOR INSTALLATION OF FOODSERVICE EQUIPMENT.
 - ALL EXPOSED PIPING (ABOVE COUNTER HEIGHT OR IN A DIRECT LINE OF SIGHT) SHALL BE STAINLESS STEEL OR CHROME PLATED. INSTALL STAINLESS STEEL OR CHROME PLATED BRASS SCREWBOLTS OR FLANGES FOR UTILITY LINES WHICH EXTEND THROUGH WALLS AND EQUIPMENT.
 - ALL EXPOSED PLUMBING SHALL BE INSTALLED A MINIMUM OF 6" AFT AND ALL HORIZONTAL RUNS SHALL BE BENEATH THE COUNTER LINE AND BELOW EQUIPMENT.
 - M.C. SHALL PROVIDE AND INSTALL ALL REQUIRED VACUUM BREAKERS, VACUUM BREAKERS, APPROVED BY THE M.P.H.A., MUST BE PROVIDED ON ALL DISPENSERS, HOSE REELS, PRESSURE WASHERS AND ON ALL BEVERAGE EQUIPMENT REQUIRING A WATER CONNECTION. ALL ATMOSPHERIC VACUUM BREAKERS MUST BE LOCATED DOWNSTREAM OF SHUT-OFF VALVES IN ACCORDANCE WITH HEALTH DEPARTMENT CODES.
 - F.E.C. TO PROVIDE SINKS WITH TWIST HANDLE 2" WASTE OUTLETS WITH OVERFLOW ASSEMBLIES. PROVIDE LODGE TO M.C. FOR INSTALLATION.

MECHANICAL SCHEDULE									
Item	Qty	Equipment Description	Hot Water	Cold Water	Hgt A.F.F.	Drain Type	Drain Size	Hgt A.F.F.	Comments
15	2	Hot Food Wells	-	1/2"	Stub Up 5"	Indirect	1"	-	Indirect Waste To Floorsink Shown
23	1	Ice Maker w/Bin	-	1/2"	5'-0"	Indirect	(2) 1"	-	Indirect Waste To Floor drain Shown
24	1	Soda System	-	1/2"	5'-0"	Indirect	1"	-	Indirect Waste To Floor drain Shown
32	1	Ice Cream Cabinet	1/2"	1/2"	1'-0"	Indirect	1-1/2"	-	Indirect Waste To Floorsink Shown
37	1	Handsink	1/2"	1/2"	1'-0"	Direct	1-1/2"	1'-6"	-
41	1	Handsink	1/2"	1/2"	Stub Up 5"	Direct	1-1/2"	Stub Up 10"	-
42	2	Drain Boards	-	-	-	Indirect	1"	-	Indirect Waste To Floor drain Shown
43	1	Ice Bin	-	-	-	Indirect	1"	-	Indirect Waste To Floor drain Shown
48	2	Coffee Makers	-	1/2"	4'-0"	Indirect	3/4"	-	Indirect Waste To Floor drain Shown
55	1	Disposer & Pre-Rinse	1/2"	1/2"	1'-0"	Direct	3"	10"	M.C. To Brach To Connections
57	1	Dishwasher	3/4"	1/2"	1'-0"	Indirect	2-1/2"	-	Indirect Waste To Floorsink Shown
59	1	3 Compartment Sink	3/4"	3/4"	1'-0"	Direct	(1) 2-1/2"	10"	Direct Waste to Grease Trap Per Local Codes
						Indirect	(2) 2-1/2"		Indirect Waste To Floorsink Shown
FD	8	Floor Drains							For Indirect Waste From Equipment Shown
FPD	1	Funnel Floor drain							For Indirect Waste From Cooler Evaporator
FS	4	Floor Sinks							For Indirect Waste From Equipment Shown

TITLE
FOODSERVICE
MECHANICAL PLAN

FS2


Food Service Designers, LLC
 9201 Funston St.
 White Lake, MI 48386
 Phone: (248) 410.3459

FOODSERVICE DESIGNERS,
PLANNERS AND
OPERATIONAL CONSULTING