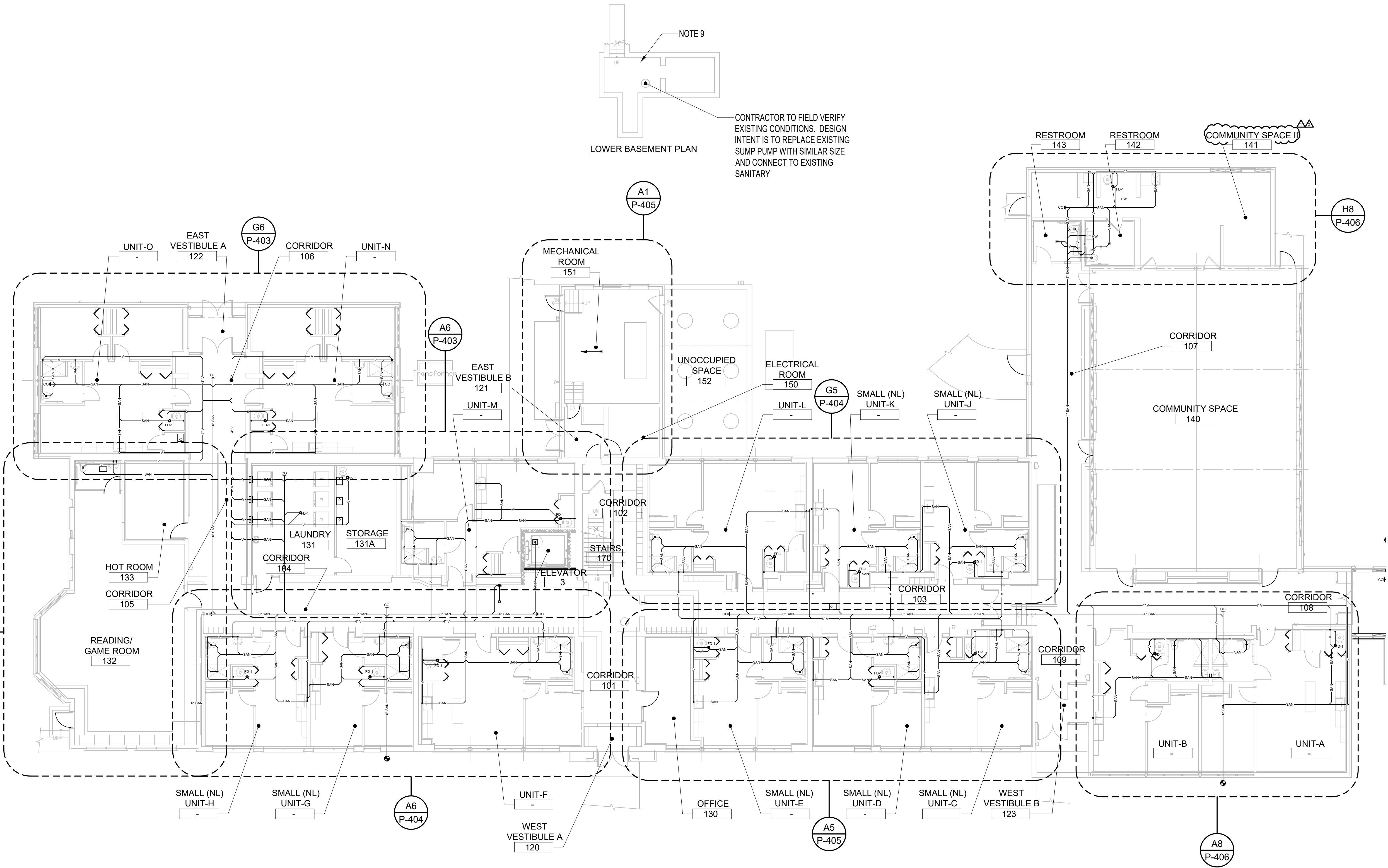
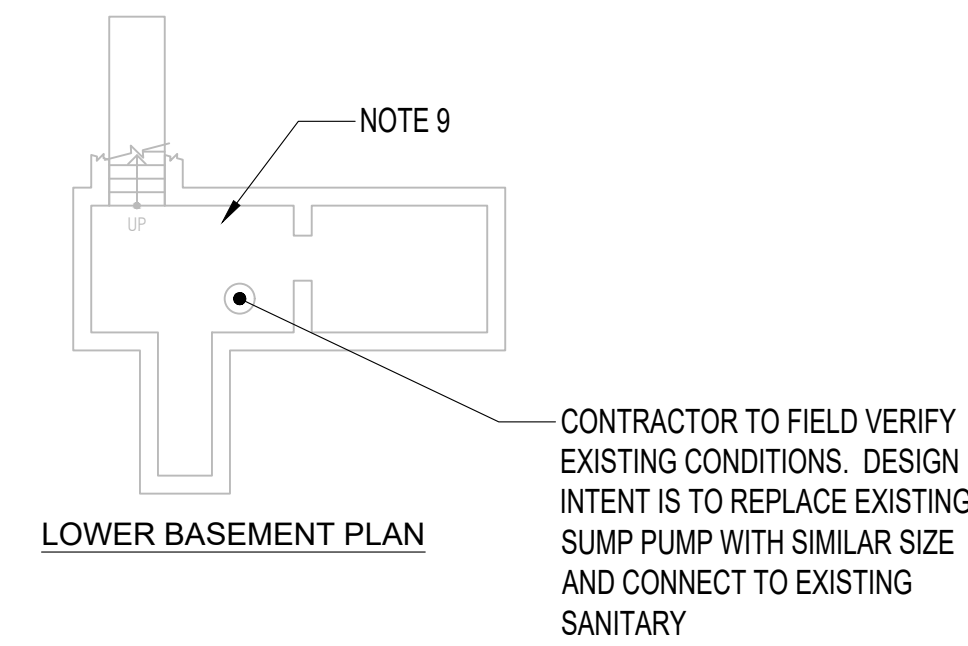


- GENERAL
- SEE SHEET P-001 FOR PLUMBING NOTES
 - PLUMBING SHEET KEYED NOTES:
 - EXTEND CONDENSATE DRAIN TO NEAREST FLOOR DRAIN IN WATER HEATER ROOM.
 - EXISTING NATURAL GAS METER AND REGULATOR BY UTILITY COMPANY. VERIFY EXISTING REGULATOR PRESSURE AND COORDINATE TO ENSURE PROPER PRESSURE IS PROVIDED FOR SERVICE TO NATURAL GAS GENERATOR.
 - VENT UP AND DOWN
 - SANITARY UP AND DOWN AND PROVIDE VERTICAL CLEANOUT.
 - REFER TO TYPICAL APARTMENT WATER RISER DIAGRAM FOR PIPING ARRANGEMENT AND SIZES.
 - CONTRACTOR TO CONTACT MISS DIG PRIOR TO START OF ANY UNDERGROUND WORK. COORDINATE WORK WITH CIVIL PLANS.
 - HEAT PUMP HOT WATER, REFER TO MANUFACTURER DRAWINGS FOR PROPER VENTILATION REQUIREMENTS FOR DOOR CLEARANCES AND SPACE REQUIREMENTS. REFER TO PLUMBING DETAILS FOR HEAT PUMP WATER HEATER PIPING AND EQUIPMENT REQUIRED.
 - GARBAGE DISPOSAL, SEE PLUMBING SCHEDULE FOR SPECIFICATIONS AND INSTALL FOR MANUFACTURER REQUIREMENTS. TO BE CONTROLLED BY SWITCH LOCATED ABOVE COUNTER SEE ELECTRICAL
 - ALL SANITARY LINES ARE BELOW FLOOR ELEVATION TO ALLOW FOR PROPER PITCH AND NEEDED FLOW. EXACT LOCATION OF TUNNEL AND BASEMENT ARE UNKNOWN AND SANITARY COULD BE IN BASEMENT OR TUNNEL. ROUTE IN A WAY TO MINIMIZE CORING. ALL VENTING AND WATER DISTRIBUTION ABOVE FINISH CEILING AS HIGH AS POSSIBLE WITHOUT INTERFERING WITH OTHER TRADES.
 - IF UNIT IS CONSIDERED ADA SUBSTITUTE FIXTURES TO ADA TYPE. COORDINATE WITH ARCH DRAWINGS.
 - DISHWASHER - PROVIDE HOT WATER



SHEET TITLE
**FIRST FLOOR -
SANITARY, VENTING
AND STORM WATER
PLAN**

SCALE: AS NOTED

ISSUED FOR	DATE
PERMIT	10.20.24
▲ BULLETIN 3	05.19.25
▲ BULLETIN 4	07.01.25

DRAWN BY _____
CHECKED _____
APPROVED _____

21026.00
FILE NO. P-101

A1 FIRST FLOOR - SANITARY, VENTING AND STORM WATER PLAN

P-101 3/32" = 1'-0"

7/1/2025 8:18:47 PM